



The Galleon

the Santa Maria Camera Club Newsletter April 2015

Meetings

1st & 3rd Wednesday
of the month
at 7:00 pm
(3rd Wednesday only
July & August)

Location

Merrill Gardens
Retirement Center
1350 N. Suey Rd.
Santa Maria, CA

Membership Dues

\$25 Individual or
\$35 Family
\$15 year Competitions

2015 Club Officers

President

Nyla James

Vice President

Dave Clary

Secretary

Janice Darby

Treasurer

Bill Hood

At-Large

Board Members

Elaine Calvert

Penni Powell

Ramona Cashmore

Flavio Parigi

Lynda Snodgrass

Alan Upshaw

Galleon Editor

Alan Upshaw

abupshaw53@yahoo.com

Upcoming Events

April 1...Program Meeting: Nyla James presents the Albuquerque Balloon Fiesta. *Show & Tell subject: Waiting*

April 4...Saturday Chat: 8:00 am Francisco's Country Kitchen, Santa Maria

April 15...Competition *Special Category:* Slow Shutter Speed

April 25...Field Trip: Fillmore Rail Festival www.fwry-blog.com

May 2...Saturday Chat: 8:00 am Francisco's Country Kitchen, Santa Maria

May 6...Program Meeting: TBA. *Show & Tell subject: Missions*

May ?...SMCC Annual BBQ...we're working on the date!

May 20...Competition *Open Category*

May 30...Board Meeting: 10:00 am, home of Tom Wahweotten



A Word From Your President.....

I've been thinking of some ways to meet our needs and also to help out our program chairman, Dave Clary. I've always enjoyed coming to the program meetings and being entertained, either by educational programs or by beautiful photographs of exotic places that I've never been. This month, I will present the April Program. You will see that my photos of the Albuquerque Balloon Fiesta are not prize winners, but they are fun and you will leave with a good feeling. I think it's time for our membership to help carry the load of the programs. I know that I would enjoy seeing programs that our own members create and present. A lot of our members have traveled to interesting places that would make for wonderful programs. This would not only help Dave in the months that he doesn't have a scheduled speaker but we would get to know each other a little bit more.

Nyla

Committee Chairs

Webmaster
Greg Doudna

Digital Projectionist
Glenn Bolivar

Slide Projectionist
Ed E. Powell

SMCC Directory
Rosie Brancacio

Saturday Morning Chat
Bob Ginn

Historian & Nametags
Nyla James

Judge Recruitment
Ramona Cashmore

Point Tabulator
Bob Ginn

Print Coordinator
Flavio Parigi

Slide Coordinator
Elaine Calvert

Program Recruitment
Dave Clary

Publicity
Bob Ginn

Refreshments
Joyce Bolivar

P.S.A. Representative
Nyla James

Library Coordinator
Ramona Cashmore

Field Trips
Penni Powell, Bob Mihelic,
Bob Ginn, Alan Upshaw
Bonnie Adams
Rosie Brancacio

SMCC Field Trips April 2015 and Beyond

Please note: Rain or bad weather can cancel outdoor activities. Contact the leader if you are in doubt. Check your email for any updates as the date of the event draws near.

April 4th (Sat 8 am) First Saturday Chat Group - Meet at 8 am @ Francisco's Country Kitchen, on N. Broadway and Williams Street in Santa Maria, next to the Best Western Motel.

Why go? - Enjoy photo talk over breakfast and coffee.

Apr 25 - Fillmore Rail Fest www.fwry-blog.com

Meet at Panera, in Santa Maria, at 7:00 am to carpool. We are just going for the day on Saturday, but the Festival also runs on Sunday. Directions: 101 South to Highway 126, in Ventura. East on Hwy 126 to 5th stop light in Fillmore (Central Ave.). Left on Central Ave., go one block. Turn right on Santa Clara St. There is parking behind City Hall on Santa Clara or cross the tracks and turn right on Main St. Parking in dirt lot off of Main. Look for yellow ticket office on North side of Main street. The event is free, but there is a charge to ride the trains. Contact Bonnie Adams for more info...

text (805) 680-5416 *email* adams@silcom.com

See page 6 of the Galleon for the press release of the event...

Why go? - Trains!

and Field Trips Beyond...

May 2nd (Sat 8 am) First Saturday Chat Group

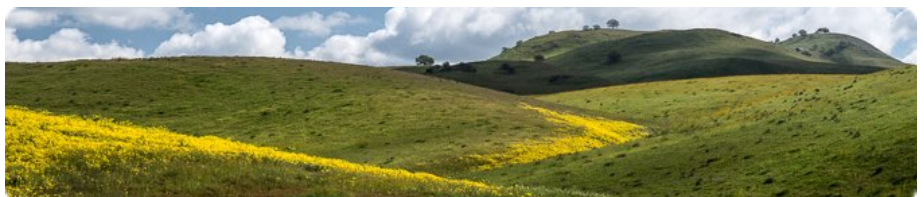
May Club Picnic

June - TBA (let us know if you have an idea...)

July 24-25 Citrus Classic Santa Paula Hot Air Balloon Festival (an overnigher to take in the Friday evening "glow" and the early Saturday morning inflation of the hot air balloons.)

If you have an idea for a field trip, please let anyone in the field trip committee know about it:

**Penni Powell, Bob Mihelic, Bob Ginn, Alan Upshaw,
Rosie Brancacio, and Bonnie Adams**



Points North and East For April 2015 by Jim Ogg

By late March, the wildflowers appearing at Shell Creek were past their prime. The Shell Creek wildflowers were the best show in several drought years but still not the Persian Carpet of the best years. The wildflower show was sufficient for the Santa Margarita Wildflower Festival to be restarted after being cancelled last year. The other Central Coast wildflower locations, Big Sur wildflowers locations, and vernal pools usually peak in March but sometimes do not peak until early April.

Late April usually takes me to Mammoth Lakes via Kern River Canyon, Walker Pass, Upper Mojave, and Owens Valley. I will be looking for wildflowers in these areas. The wildflowers of the Mojave Desert often peak during April. This includes Alabama Hills, Haiwee Creek, Aberdeen, Division Creek, Fossil Falls and Red Hill. The Sealth image "Bush Lupine (SR223)" shows Division Creek in a good wildflower year; it is a haze of blue and purple. Also this is a good time to check out the arches in the Alabama Hills area.

Two articles from the Mammoth Lakes newspaper of March 19, 2015, indicated that the road to the Schulman grove is now open but the Visitor's Center is still closed as is the road to Patriarch Grove and "due to prevalent fall and winter precipitation in (Death Valley) Park, wildflowers are abundant across the park landscape"

As of March 1st, the snow pack in the Sierra was the second smallest recorded amount. April is usually the best opportunity for "last snow" images. And through mid-June "last snow" and "ice breakup" may occur at June Lake Loop Lakes, Convict Lake, Mono Lake, Parker and Walker Lakes. Tioga Pass should open by Memorial Day - Nature and the Park Service willing. The Park Service appears reluctant to open earlier but tries maybe too hard to open as soon as possible after Memorial Day weekend.

April is the best time to check out the many waterfalls and swimming holes at the lower elevations of the western sierra. This includes Bass Lake, Lewis Creek, Diana Pools, Rainbow Pools, and Foresta Falls.

Please provide additions, corrections and comments via e-mail, jimogg@tcsn.net, and visit the website, www.tcsn.net/ogg.

Bush Lupine (SR223)

In the good wildflower years, Division Creek, north and west of the Alabama Hills, is a haze of blue and purple from the Inyo bush lupine.

The "Bush Lupine" image is part of the Sealth body of work which are digital images of landscapes, scenics, and the human form and are based on locations in the Division Creek, Alabama Hills, Lone Pine, Owens Valley, Eastern Sierra, High Sierra and Central Coast of California.



Competition Special Assignments

*

April 2015...
Slow Shutter Speed

June 2015...
Geometric Shapes

August 2015...
Barns

October 2015...
Fall Color

*

Competition Rules

3 entries per competition.

Categories of your choice not to exceed (2) in any combination of categories.

Categories will be:

Small Prints (9x13 max)

Monochrome Prints (Large Back)

Color Prints (Large Back)

Slides & Digital

Submit your images for
digital competitions to

Glenn Bolivar...

glennabolivar@gmail.com

Images can also be submitted
on a flash drive, or other media.

Digital images **MUST** be received
no later than midnight on the
Sunday before the Competition.

Images not received in time will
not be entered into the competition.

March Competition Results

Large Color Prints (14 images)

- 1st **Crop Art**, by Ed E. Powell
2nd **Fog Bank**, by Ted Maddux
3rd **Sandhill Crane**, by Richard Russ
HM **Watch**, by Ted Maddux

Monochrome Prints (5 images)

- 1st **The End**, by Ted Maddux
2nd **Mesquite Flat Sand Dune**, by Ron Calvert
3rd **Morning Sunrise**, by Richard Russ
No HM

Small Prints (13 images)

- 1st **The Eagle**, by Robert Ginn
2nd **Mesa Arch View**, by Ron Calvert
3rd **An Elegant Bird Of Paradise**, by Lynda
Snodgrass
HM **Waiting For The Mail**, by Lynda Snodgrass

Digital Images (14 images)

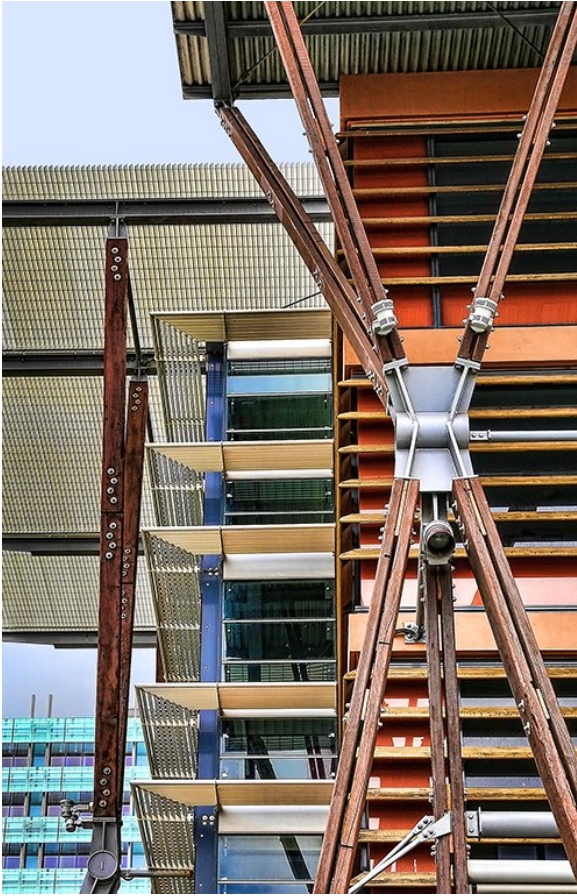
- 1st **Receding Planes**, by Joseph Amanzio
2nd **In Or Out Or Up Or Down**, by Joseph Amanzio
3rd **Daylily In Bloom**, by Robert Ginn
HM **Havasu Water**, by Ed E. Powell

Slides (5 images)

- 1st **Soft Morning Light**, by Penni Powell
2nd **To Honor Those Who Served**, by Penni Powell
3rd **Delicate Arch**, by Bonnie Adams
No HM

Treasury Report

- The Club has a balance of \$1973.87
- There are currently 45 paid members.



**Some of the winning images from
the March 2015 Competition...**

upper left...Receding Planes
by Joseph Amanzio

upper right...Havasu Water
by Ed E.Powell

lower left...An Elegant Bird of Paradise
by Lynda Snodgrass

lower right...Waiting for the Mail
by Linda Snodgrass



Santa Clara River Valley "Railfest 2015"

"Looking Towards the Future"

Set for Weekend of April 25th and 26th

"Looking Toward the Future" is the theme of the Santa Clara River Valley Railroad Historical Society's (SCRVRHS) Annual Railfest, co-sponsored by the Fillmore & Western Railway. The Railfest, which attracts thousands of visitors annually, takes place at Central Park in Fillmore on the weekend of April 25th and 26th between 9:00am and 5:00pm. Admission and parking are free.

Following in the SCRVRHS tradition to provide Southern California with a family fun event, the Railfest offers railroad-related activities such as miniature steam train rides; 'speeder' rides, turn table demonstration, displays from various railroad-related organizations, including model railroads, Operation Lifesaver, and food booths, including SCRVRHS' very own Locomotive Tri-Tip Bar-B-Que. Other invited attractions include the famous Frontier Gunfighters, antique farm equipment demonstrations and vintage tractors, live musical entertainment, arts and craft booths, and commemorative festival T-shirts.

This year, there will be 1 hour train rides departing at 10:00am, 11:30am, 1:00pm and 2:30pm. A caboose will also be added to provide a unique and rare opportunity for the public to ride in an actual caboose for a one hour excursion.

A Family Comedy Murder Mystery Dinner Train will run on Saturday, April 25 featuring a Spaghetti dinner. On board will be gunslingers, good guys in white hats, frontier gals and other mystery players. Reservations required. For tickets or information please visit www.fwry.com or call 805-524-2546.

SCRVRHS will also have their 1956 Union Pacific Pullman Sleeping Car open for public inspection. The car, designated by U.P. as #1205 the 'National Embassy', is one of only twelve flat-sided aluminum 'Embassy' cars built for the Union Pacific Railroad. It came directly out of U.P. service spending the last twenty+ years on static display at the Miramar Hotel in Montecito. The interior is untouched and virtually original in every detail, right down to the Union Pacific blankets and Pullman soap bars. It has roomettes, staterooms, and a rare open section. A real step back into the closing days of the golden age of passenger train service! You'll want to see this.

Plus the SCRVRHS RR Visitor Center will be open. The Center, located in the old Fillmore City Fire house, contains many railroad artifacts, an educational library, Lionel model train layout, gift shop and a video library and theatre.

Visit the old Southern Pacific Depot, Bunkhouse, or Hinckley house at the Fillmore Historical Society, which is rich in Fillmore history. They are located near the turntable.

This is SCRVRHS's annual opportunity to demonstrate their charter as a non-profit organization whose mission is to preserve the history of the old Santa Paula Branch Line. Most of the Festival proceeds benefit the non-profit, its railroad restoration efforts; and a roundhouse/Railroad Interpretive Center.

Fillmore is located 40 miles north of Los Angeles in Ventura County on Highway 126 between Interstate 5 at Magic Mountain and the 101 Freeway in Ventura.

R U a film shooter?

The Film Photography Project (FPP) has a great website & podcast www.filmphotographyproject.com

Their store stocks many film stocks including 120, 35mm, 126, 110, Polaroid, etc. FPP has lots of resources for film photographers. Wanna turn B&W negatives into slides? Check out these folks www.dr5.com.

Images from the SMCC's La Purisima Field Trip...March 21, 2015



above courtesy...Bob Mihelic



*above and below...
courtesy Ed E. Powell*

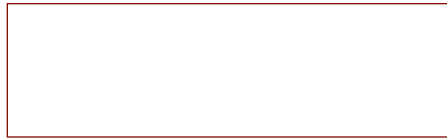


*above and below...
courtesy Ed E. Powell*





Santa Maria Camera Club
P.O. Box 1605
Santa Maria, CA. 93456
santamariacameraclub.org
(click on the above link)



In or Out or Up or Down, by *Joseph Amanzio*, won **2nd Place**
in the Digital Category at the March 2015 Competition