



# the Galleon

the Santa Maria Camera Club Newsletter June 2016



## Meetings

1st & 3rd Wednesday  
of the month  
at 7:00 pm  
(3rd Wednesday only  
July & August)

## Location

Merrill Gardens  
Retirement Center  
1350 N. Suey Rd.  
Santa Maria, CA

## Membership Dues

\$25 Individual  
\$35 Family  
\$15 year Competitions

## 2016 Club Officers

### President

Dave Clary

### Vice President

Jeanne Sparks

### Secretary

Janice Darby

### Treasurer

Bill Hood

### At-Large

### Board Members

Richard Russ  
Penni Powell  
Rosie Brancacio  
Flavio Parigi  
Lynda Snodgrass  
Ed E. Powell

### Galleon Editor

Alan Upshaw

[abupshaw53@yahoo.com](mailto:abupshaw53@yahoo.com)

## Upcoming Events...

**June 1...Program Meeting**, Short Programs by our Members

**June 4...1st Saturday Chat Group**, Francisco's, Santa Maria, 8:00am

**June 5...Field Trip**, Ukulele Festival, Grover Beach, *see page 3*

**June 10 & 11...Field Trip**, Venice Beach Overnighter, *see pages 3 & 10*

**June 15...Competition**, Special Category, **Eyes**, 7:00pm

**June 20...Board Meeting**, Merrill Gardens, 7:00pm

**No 1st Saturday Chat in July - No Program Meeting in July**

**July 14...Field Trip**, SB County Fair, Santa Maria Fairgrounds, details TBA

**July 20...Competition**, Open Category, 7:00pm

**August 3...Pizza Party & Swap Meet**, Merrill Gardens, 7:00pm

## Wednesday, June 1 Program Meeting

At our Wednesday, June 1 Program Meeting, our own members will show their work. The members and their topics are: **Rosie Brancacio**, "Horses;" **Ed Powell**, "Darth Valley;" **Jim McGinnis**, "Venice;" **Jim Ogg**, "Sierra Gardens;" **Flavio Parigi**, "Italy," and possibly **Janice Darby**, whose topic I do not know. The shows run from five to 15-minutes each.

We will not have a program meeting in July. In August, we will have a pizza party and swap meet like last year. In September, Karen Carson will demonstrate how to make photo books. Please let me know if you will also be bringing photo books. We can learn from each other. In October, Chuck Jennings will show us how to organize our images using Lightroom and Photoshop.

I hope you'll join us for each of these program meetings on the first Wednesday of the month at 7 p.m.

**Jeanne Sparks**, SMCC Vice President

## Notice of a Scheduled Meeting of the SMCC Executive Board

Our Executive Board will have its third meeting of the year at our regular club meeting room at Merrill Gardens on Monday June 20, 2016. I have reserved the room. We will begin at 7:00 pm, though people can certainly arrive earlier to help arrange tables and chairs. Our goal is to finish sometime between 9:00 and 9:30 pm. Our Executive Board meetings are open to all club members.

**Prez Dave**

## **Committee**

### **Chairs**

#### **Webmaster**

Greg Doudna

#### **Digital Projectionist**

Richard Russ

#### **Slide Projectionist**

Ed E. Powell

#### **SMCC Directory**

Rosie Brancacio

#### **Historian & Name-tags**

Nyla James

#### **Judge Recruitment**

Ramona Cashmore

#### **Point Tabulator**

Richard Russ

#### **Print Coordinator**

Flavio Parigi

#### **Slide Coordinator**

Elaine Calvert

#### **Program Recruitment**

Jeanne Sparks

#### **Refreshments**

Joyce Bolivar

#### **PSA Representative**

Nyla James

#### **Library Coordinator**

Ramona Cashmore

#### **Meeting Room Setup**

Dalton Pittman

#### **Sunshine Lady**

Bonnie Adams

#### **Field Trips**

Penni Powell

Bob Mihelic

Jim Ogg

Sharon Salerno

Rosie Brancacio

Bonnie Adams

Alan Upshaw

## **President's Message**

I don't really have to tell y'all about what a great BBQ we had at Richard and Dawn Russ' on Saturday May 21 ... that is because most of our membership was there. John Lindsey, of the PG&E weather report ... who is very rarely wrong ... predicted cold and windy weather, with the possibility of thundershowers. However, we put in a special request for good weather and got it. We didn't even have to Photoshop it in.

I personally am looking forward to the images our membership comes up with at the next competition on June 15, where the topic is EYES.

**Prez Dave**

## **Spring Potluck & BBQ**

Wonderful day: perfect weather, lovely site, excellent food and outstanding BBQ. There were 39 members, spouses & family in attendance at Richard's and Dawn's home. I want to thank everyone who participated in the event since all attendees contributed.

### **Special thanks to:**

- ❖ Dawn Russ for the site arrangements that included flowers for each table and for coordinating the behind-the-scenes in the kitchen.
- ❖ Penni Powell for the bingo contest based on her insider knowledge of members' characteristics. We have NO secrets!
- ❖ Ed Powell and Penni again for providing chairs and a table.
- ❖ Sharon Salerno for consulting on plans for the event and for bringing lots of chairs and tables along with Jim Ogg for helping out with her chairs and tables.
- ❖ Gene Kilmer for an excellent BBQ featuring his special tri tip and chicken.
- ❖ Bob Mihelic for arriving early to help set up tables and chairs.
- ❖ Richard Russ for all the set-up including chairs, tables, a BBQ and wood for the BBQ fires.
- ❖ My hubby, Dave Clary, for signs, the loan of a BBQ grill and helping out where needed.
- ❖ All those who brought food to share. We seem to eat very well at our potluck events thanks to the efforts of our members.
- ❖ Last, but not least in any way, Richard and Dawn for making their appealing, comfortable, home and grounds available to us for the BBQ.

**Lil Clary**

*Highlights from the SMCC BBQ can be found on pages 7 thru 9.*

# SMCC Field Trips May 2016 and Beyond

*Please note: Rain or bad weather can cancel outdoor activities. Contact the leader if you are in doubt.*

*Check your email for any updates as the date of the event draws near.*

**June 4th (Sat 8am) First Saturday Chat Group** - Meet at 8 am @ Francisco's Country Kitchen on North Broadway and Williams Street in Santa Maria, which is next to the Best Western Motel.

*Why go? - Enjoy photo talk over breakfast and coffee.*

**June 5th (Sun 12-2:30pm)** - Ukulele Festival, Ramona Park, Grover Beach

Join Alan and Penni at the Ukulele Festival featuring 4 bands: ~ Flaming Ukuleles ~ Na Hoa Aloha~ Oasis Ukuleles ~ Hoapili Pomaika'a Aloha, group strum opportunities, hula dancing and more! This followed at 3pm by another band until 6pm, The Brass Factory (Classic Rock, Soul, R&B).

Ramona Park is at 993 Ramona Avenue in Grover Beach. Bring a picnic lunch (or buy food there), beach chairs, sun block, etc., for lounging on the lawn when you aren't taking photos.

*Why go? - I hiki Hula me ko'u pahupa'iwikiō! (I can hula with my camera!)*

**June 10-11th (Fri 6:30pm-Sat)** - Venice Beach Street Photography Overnighter

We will visit Los Angeles' creative multicultural circus of Venice Beach, where bohemia and underground cultures collide (see the Venice Beach flyer). Meet up at the Venice Beach Skate Park (1800 Ocean Front, Venice Beach 90291) on Friday evening at 6:30pm to catch the sunset and evening "circus". Then we meet again on Saturday morning for more photo ops until lunch time or later?

Trip leader Rosie Brancacio is staying at the La Quinta Inn & Suites of Inglewood on Friday night, though there are many hotels around LAX to choose from.

*Why go? - Check out the flyer...(page 10)*

**Other June Ideas** - Rosie B will have her calendar out soon.

## And Field Trips Beyond...

**July 2nd** - Saturday Chat is cancelled and will resume in August

**July 4th** - Enjoy your 4th of July!

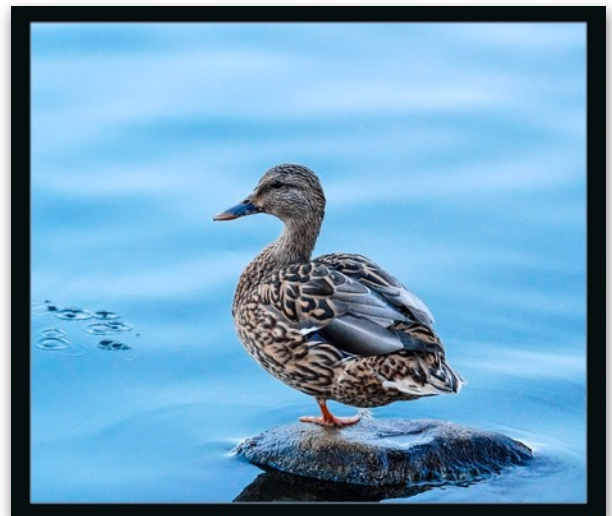
**July 14th (Thurs)** - Santa Barbara County Fair Midway and Rodeo Action

**August** - "Butterflies Alive!" at the Santa Barbara Natural History Museum

**We get  
the  
shots!**



Spring Run Off by Richard Russ, see page 4



Stand Alone by Jeanne Sparks, see page 4

## Competition Special Subjects



**June 2016**

*Eyes*

**September 2016**

*Flying Things*

**March 2017**

*Wildlife*



## Competition Rules

3 entries per competition.

Categories of your choice not to exceed (2) in any combination of categories.

### Categories will be:

**Small Prints (9x13 max)**

**Monochrome Prints  
(Large Back)**

**Color Prints (Large Back)**

**Slides**

**Digital**

**Submit your images for  
digital competitions to:**

Richard Russ  
[rruss12@gmail.com](mailto:rruss12@gmail.com)

Images can also be submitted on a flash drive, or other media. Digital images MUST be received no later than midnight on the **Monday** before the Competition. Images not received in time will not be entered into the competition.

## May Competition Results Judge: Christine Lester-Deats

### Monochrome Prints

1st	<i>Spring Run Off</i>	Richard Russ
2nd	<i>Early Morning with Fog</i>	Richard Russ
3rd	<i>Surfer Dude</i>	Dave Clary

### Small Prints

1st	<i>The Audience</i>	Janine Bognuda
2nd	<i>Raw Symmetry</i>	Scott Clark
3rd	<i>A Look Down the Vines</i>	Rosie Brancacio

### Large Color Prints

1st	<i>Royalty</i>	Dave Clary
2nd	<i>Wendy the Wood Nymph</i>	Janice Darby
3rd	<i>Carved by Time</i>	Janine Bognuda
HM	<i>Cuyama Valley Mountains</i>	Ramona Cashmore

### Digital

1st	<i>Stand Alone</i>	Jeanne Sparks
2nd	<i>A Day in the Park</i>	Jeanne Sparks
3rd	<i>Coffee or Cappuccino</i>	Jeanne Sparks

### Slides

1st	<i>The Flower</i>	Penni Powell
2nd	<i>Sea Lions in Alaska</i>	Flavio Parigi
3rd	<i>Mayan Rest Stop-Peru</i>	Dalton Pittman

**Members participating in competitions must be up to date with membership & competition dues.**

**Welcome New Members...**

**Larry Decker**

**John Scherrer & Bonnie Nitta**



## Treasury Report



**The Club has a balance of \$1555.44  
There are currently 50 paid members.**



# A Selection of May 2016 Competition Winners



**A Day in the Park**  
by Jeanne Sparks



**The Audience** by Janine Bognuda



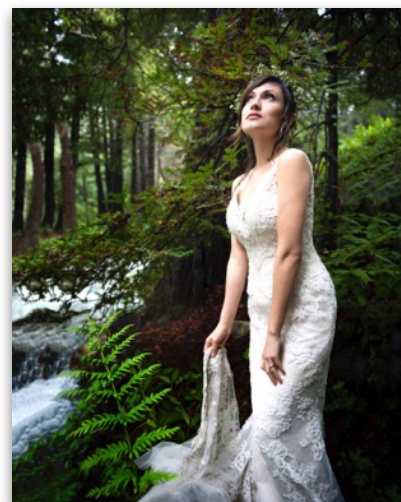
**Carved by Time**  
by Janine Bognuda



**Coffee or Cappuccino**  
by Jeanne Sparks



**Cuyama Valley Mountains**  
by Ramona Cashmore



**Wendy the Wood Nymph**  
by Janice Darby



**Raw Symmetry** by Scott Clark

These, and many more images from club members, can be found on our website  
[santamariacameraclub.org/gallery.html](http://santamariacameraclub.org/gallery.html)

# Points North and East For June 2016 by Jim Ogg

El Nino is transitioning into La Nina. The rainfall was average and the Central Coast faces another drought year. However the snowpack is above normal, much better than the last four years. But Tioga Pass should be open for Memorial Day Weekend. Also Mammoth Lakes Basin and Sonora Pass usually are open by Memorial Day weekend. Also by late May breakup is finished, nearly all trailheads accessible, the upper Steppe wildflowers are blooming and Forest wildflowers are starting. The Irises in the Bishop area and the Desert Peach in the upper Steppe bloom late May or early June. Lower Steppe, Owens Valley and Mojave wildflowers are usually past their peak.

Mammoth can still have snow storms in June. These I call "last snow". Last snow is often much more photogenic than mid-winter snow. And with last snow, access is often better. Depending on access and snow level, McGee Canyon, Convict Lake, Little Lakes Valley, and Mammoth Lakes Basin are places to check for last snow.

With the opening of Tioga Pass access to Tuolumne Meadows is available from Mammoth. The initial interest is "High Water" at Cathedral Cascade, Upper Tuolumne River, Dana Fork, and Lyell Fork in the Tuolumne area. Also of interest are Minaret Falls and Rainbow Falls in the San Joaquin River Basin and Lundy Canyon Falls and Cascades. The "Tioga Log Rider (SR182)" Sealith image shows the Tioga Pass area before the Pass is opened. An obvious avalanche path occurs just west of the Tioga Pass entrance to Yosemite National Park. However the expected chaos and violence of avalanches is lacking. The trunks are stripped of limbs and branches and are placed in alignment. An alternate explanation could be occurring unseen before the Park finally opens Tioga Pass.

Snow Plants provide bright red color in the drab ground following snow melt. I look for Snow Plants at Glacier Point, Yosemite Creek, and Devils Postpile. And Snow Plants can be found in the Sierra Forest, northeast of Oakhurst. In the El Portal area, the Matilija Poppies usually peak. These 4-7 inch white flowers on 4-8 foot stems are California's largest natives and among the most photogenic.

The Irises may fill meadows with masses of intense deep blue. The meadows of Mono Lake, Bridgeport and Bodie should happen in June and early July. Also the upper Steppe wildflowers should peak in June or early July. In some locations "gardens" can be found. These may have up to two dozen varieties and a dozen different colors. The gardens of McGee Canyon, Walker Creek-Parker Creek, Heart Lake, and Mono Lake Marina could be well worth visiting. Also Lee Vining Creek, Tioga Pass roadside, Parker Lake, Walker Lake, and Lundy Canyon, are places to checkout for Upper Steppe wildflowers although some hiking may be necessary. Those who went on the club's Eastern Sierra trip in 2005 should have fond memories of McGee Gardens and Lundy Canyon.

In 2008, the Sierra snowpack started melting early so the alpine and sub-alpine wildflowers peaked earlier and were somewhat stunted from a shorter growing season. And depending on the summer rains, thunderstorms actually, the fall color season may start earlier and may be spread over a longer duration. Aspens often turn early under drought conditions.

Please provide additions, corrections and comments via e-mail, [jimogg@tcsn.net](mailto:jimogg@tcsn.net), and visit the website, [www.tcsn.net/ogg](http://www.tcsn.net/ogg). Text and Images are copyrighted by Jim Ogg. All rights reserved. Please see website for details.

## Tioga Log Rider (SR182)

An obvious avalanche path occurs just west of the Tioga Pass entrance to Yosemite National Park. However the expected chaos and violence of avalanches is lacking. The trunks are stripped of limbs and branches and are placed in alignment. An alternate explanation could be occurring unseen before the Park finally opens Tioga Pass.

The "Tioga Log Rider" image is part of the Sealith body of work which are digital images of landscapes, scenics, and the human form and are based on locations in the Tioga Pass, Tuolumne Meadows, Yosemite National Park, Eastern Sierra, High Sierra and Central Coast of California.





# 2016 SMCC Annual Club BBQ Highlights



*Photos courtesy of Richard Russ*





# SANTA MARIA CAMERA CLUB



This is the game we played at the club BBQ. Each bingo square identifies something about the people who were there. Just for fun, I'm providing some of the answers that were filled in, though probably there are more identities than we found out during the game (and I didn't have all the game cards turned in to me).

We all had a good time getting to know each other and winning prizes. Thanks, Penni



*Photos courtesy of  
Rosie Brancacio*



<b>I love to photograph trains</b>  Bonnie Pitt	<b>I have a Facebook account</b> Lynda Sharon S Rosie Dawn Sharon P	<b>I've been a club member for less than 5 yrs</b> Carl Jim S Larry Janice Greg Ted	<b>I'm a native Californian</b>  Carl Richard Sylvia Joyce Jim O Rosie Janice Dawn Dave Ken Ed	<b>I have a Nikon camera</b> Lucy Larry Bill H Janine Jim O Debbie Sharon Glenn Janice Bob M
<b>I can make a loud whistle using my fingers</b>  Ted Jim O Carl	<b>I have film in my 'frig or freezer</b>  Penni Brad Jim O Bill H Bob M Glenn	<b>I like to eat kale</b>  Janice Dawn Brad Jeanne Bob M Debbie	<b>"Photographer" is/was my profession</b>  Glenn Bill H	<b>I own a business</b>  Roger Richard Dawn
<b>I've accidentally photographed my own feet</b>  Greg Bob M Janine Joyce Brad	<b>I have 4 or more grandchildren</b>  Sharon Roger Bob M	<b>I'm on the 2016 SMCC Board of Directors</b>  Bill H Jeanne Lynda Rosie Ed Janice	<b>I have a Master's or Doctorate degree</b>  Cheryl Dave Larry Bill H Ken Jim O	<b>I play a musical instrument</b>  Lil Lucy Jeanne Dawn Roger Sharon P
<b>I play(ed) on an athletic team in high school</b>  Joyce Cheryl Larry	<b>I have my own website</b>  Ed Sylvia Janice	<b>I take photos with my cell phone</b>  Lil Larry Ken Sylvia Penni Dawn	<b>I drive a vehicle that's more than 30 yrs old</b>  Jim S Jim O Ed	<b>I use Apple, not Microsoft, for processing</b>  Dave Cheryl Brad Jeanne Larry Janice Janine Glenn
<b>I have a Canon camera</b>  Gene Ed Rosie Dave Lynda Richard Brad Carl	<b>I serve(d) in the armed forces</b>  Greg Jim O Gene Carl Pitt	<b>I speak more than 2 languages</b>  Flavio Ed	<b>I have photographed the Northern Lights</b>  Pitt Roger	<b>I have at least 2 dogs and/or cats</b>  Bill and Debbie Janine and Scott Dawn Jim O Larry Penni and Ed





*Photos courtesy of  
the Darby's 5 year old  
granddaughter*

### **Macaroni & Cheese Recipe**

- about **10 slices of thick cut bacon** (we used smoked bacon) cut into 1/4" slices and cook till done, remove and drain fat
- **1 sweet onion** chopped, sauté in 1 stick of butter for about 20 minutes, until well caramelized on a medium high heat, watch and stir often as to not burn
- **2 pound bag of large elbow macaroni**, cook in boiling water for about 5 minutes, drain, add back to pan and toss with **1 stick of butter**

while noodles are hot. These will continue to cook in the oven.

- Add to caramelized onions, **1 block of grated smoked gouda, 1 block of white cheddar cheese, 1 block of extra sharp cheddar cheese** (blocks of cheese are about 4-6 ounces), about 4 cups of sharp cheddar cheese, about **1 cup of milk, 16 ounces of sour cream**, salt and pepper to taste
  - Pour over noodles and stir to coat. Add bacon and stir in.
- \*\*\*Save some of the cheese for the top, mix this cheese

with maybe a 1/4 cup, (or little less) of bread crumbs (I use Italian) and smoked paprika, mix well and layer on top.

- **Bake at 350 for 45 minutes to an hour.** I like the top to be a little crispy.

**This amount is good for a large crowd, if you are making it for a smaller crowd buy the 1 pound bag of macaroni and halve the rest of the ingredients. Don't make this if you are concerned about calories!!**

*Enjoy,  
Janice Darby*



# Venice Beach Field Trip

**June 10<sup>th</sup> & 11<sup>th</sup>**



Muscle Beach



**Why Go?????**

The Canals



Contact info for  
Rosie Brancacio  
Cell# 909-838-8022



Venice Beach  
Freakshow

Contact info for  
Penni Powell  
Cell# 805-363-1931  
Home# 805-929-2420  
if prior to field trip

Mosaic Tile House



Boardwalk  
Entertainment

The Boardwalk

