



the Galleon

the Santa Maria Camera Club Newsletter October 2015



Affiliated since 1958

Meetings

1st & 3rd Wednesday
of the month
at 7:00 pm
(3rd Wednesday only
July & August)

Location

Merrill Gardens
Retirement Center
1350 N. Suey Rd.
Santa Maria, CA

Membership Dues

\$25 Individual or
\$35 Family
\$15 year Competitions

2015 Club Officers

President

Nyla James

Vice President

Dave Clary

Secretary

Janice Darby

Treasurer

Bill Hood

At-Large

Board Members

Elaine Calvert
Penni Powell
Ramona Cashmore
Flavio Parigi
Lynda Snodgrass
Alan Upshaw

Galleon Editor

Alan Upshaw
abupshaw53@yahoo.com

Upcoming Events

- Oct 7... **Program Meeting**, Michael Mariant, Still Camera Video, 7pm
Oct 10... **1st Saturday Chat Group**, Francisco's, Santa Maria, 8am
Oct 10... **Board Meeting**, Francisco's, Santa Maria, 10am
Oct 11... **Field Trip**, Fall Color in SLO County, 8am, (see page 3)
Oct.21... **Competition Meeting, Special Category**, Fall Colors, 7pm
Oct 25... **Field Trip**, SLO Lighthouse Sunset, 4-8 pm, (see page 3)
Nov 4... **Program Meeting**, Nyla James, Cell Phone Photography, 7pm
Nov 7... **1st Saturday Chat Group**, Francisco's, Santa Maria, 8am
Nov 18... **Competition Meeting, Open Category**, 7pm
Nov 21... **Board Meeting**, Francisco's, Santa Maria, 10am



October Program Meeting

Michael Mariant will be presenting a program on Wednesday, Oct. 7, 2015 on simple video with our still cameras. Most of us have that capability, but it can be daunting to deal with the terminology and myriad of settings (yet our smart phones are so simple to shoot video with).

I took a brief class (half-day session) from a photographer who used the video on his camera (a Panasonic micro 4/3s in his case, but our Canons, Nikons and Sonys will do the same). He would take brief 10-15 second segments and add them to his digital slide shows. I thought they added enormous impact. One was especially impressive. He had a still of a folk dancer in Mexico, then all of a sudden she started dancing. He did not add additional video equipment to his camera but used it as is. I have asked Michael to focus on that kind of video photography.

Our president, Nyla James, attended a presentation he did at a photography workshop in Morro Bay, and was very impressed. I hope we will be able to put together a handout with simple explanations of terminology so it will not be just in one ear and out the other. Bring your cameras so we can play with settings and hopefully get them set up in a useful fashion.

Dave Clary

Merrill Gardens locks the outside doors at 7:00 PM.
Please call members on their cell phones if arriving late.

Committee Chairs

Webmaster
Greg Doudna

Digital Projectionist
Glenn Bolivar

Slide Projectionist
Ed E. Powell

SMCC Directory
Rosie Brancacio

Saturday Morning Chat
Bob Ginn

Historian & Name-tags
Nyla James

Judge Recruitment
Ramona Cashmore

Point Tabulator
Bob Ginn

Print Coordinator
Flavio Parigi

Slide Coordinator
Elaine Calvert

Program Recruitment
Dave Clary

Publicity
Bob Ginn

Refreshments
Joyce Bolivar

PSA Representative
Nyla James

Library Coordinator
Ramona Cashmore

Meeting Room Setup
Dalton Pittman

Sunshine Lady
Bonnie Adams

Field Trips
Penni Powell, Bob Mihelic,
Bob Ginn, Rosie Brancacio
Bonnie Adams,
Alan Upshaw

PSA Update and More

Mark Your Calendar

Nyla James, President

Please mark your calendar for the Saturday Morning Chat - October 10 at 8am followed immediately by our Board Meeting at 9am. We have postponed the Chat by one week because Bob and I will be out of town at the PSA Conference which takes place this year in West Yellowstone September 27-October 3. I'm anxious to bring back new information on photography to share with you. I'm also attending a workshop on the latest in Cell Photography and will be presenting this to our club at the Program Meeting on November 4th.

The PSA Yerba Buena Chapter will be holding an all-day seminar on Saturday, October 17, 2015, at the San Leandro Library in San Leandro, CA, between Oakland and Hayward. Landscape and Wildlife Photographer Russ Burden of Highlands Ranch, Colorado, will present six topics and answer questions. Registration fee for PSA members is \$25, non-PSA members \$40.

Information and Registration Form:

http://psa-yerbabuenachapter.org/uploads/Rus_Burden_Flyer.pdf

The PSA Southern California Roundup Chapter will host an event that I have some early information on. It will take place at the Crown Plaza in Costa Mesa, on February 6, 2016. This event will be free of charge to all PSA members and is set around the Lunar New Year which is on Monday, Feb 8. The event will include a sunset photo shoot at the Huntington Pier arranged with surfer models on Friday, Feb 5. The main event will be on Saturday, Feb 6. Vietnamese Models will be available for us to pose and photograph. I'm unsure of the guest speaker on Saturday at this time but I know that he will be promoting a Night Photography excursion to Bode for an additional charge. The buildings will be open to enter and photograph and as the evening progresses, the interior of some buildings will be lit. On Sunday, Feb 7, there will be a New Year event celebration for a \$5 parking fee. This is a brief summary of the event. More precise information will follow as we get closer.

Welcome New Members
Robin Dornon
Roy Hovey

Treasury Report
The Club has a balance of \$1706.26.
Currently there are 47 paid members.

SMCC Field Trips October 2015 and Beyond

Please note: Rain or bad weather can cancel outdoor activities. Contact the leader if you are in doubt. Check your email for any updates as the date of the event draws near.

Oct 3rd (Sat 8 am) First Saturday Chat Group - Meet at 8am @ Francisco's Country Kitchen on North Broadway and Williams Street in Santa Maria, which is next to the Best Western Motel.

Why go? - Enjoy photo talk over breakfast and coffee.

Oct 11 (Sun 8 am) Fall Color in SLO County - Nipomo to Avila

Start with breakfast at Nipomo's Cowgirl Cafe (501 Orchard Rd at Division St) at 8 am.

About 9 am we'll head for the Nipomo Pumpkin Patch at 662 Eucalyptus Road (Koch's) for photos in their pumpkin field. Next we go North to Avila Valley Barn (560 Avila Beach Dr.) for more fall color scenes followed by a drive up See Canyon to Gopher Glen Apple Farm (2899 See Canyon Rd.). From there, take in the views from Port San Luis and maybe a bit to eat again at the end of the field trip.

Your leader is Penni at 929-2420 or cell on trip day 363-1931.

Why go? - When you don't have Sierra aspens, you have to make do with pumpkins!

Point San Luis Lighthouse Sunset Tour – Sunday - Oct 25 2015 @ Avila Beach @ 4:00 PM to 8:00 PM

Cost \$25.00 Club members will be able to roam the Lightstation; there won't be an organized tour. More info forthcoming from Bob M – limited to 20 photographers.

Please sign up ASAP to rmihelic@charter.net

Other October Ideas - Rosie B will have her calendar out soon. The first weekend **Oct 3/4** has the Autumn Grapes and Grains Festival in SM, as well as the Chumash Inter-Tribal Pow-Wow at the Live Oak Campground off Hwy 156 and the Central Coast Railroad Festival www.ccrf.com. On **Oct 10th** from 10am-3pm is the SLO Airport Day. Ground breaking for the new terminal occurs at 11:30am. (free) www.sloairport.com

And Field Trips Beyond...

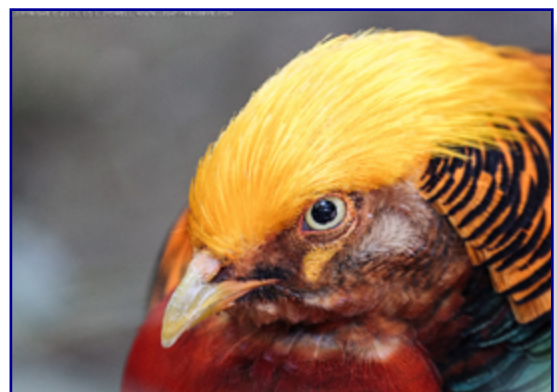
Nov 7th (Sat 8am) First Saturday Chat Group - Meet at 8am @ Francisco's Country Kitchen on North Broadway and Williams Street in Santa Maria, which is next to the Best Western Motel.

Dec 2015 - SAVE THE DATE - Dec 17 - 20 Monterey Exploring/Point Lobos Bob M. will share more info on where to stay for this 3 night field trip via email and at the meetings.



**Two images from
the club's
September
field trip to the
Santa Barbara
Zoo**

*photo credits...
Ed E. Powell*



**If you have an idea for a field trip,
please let anyone in the field trip committee know about it:
Penni Powell, Bob Mihelic, Bob Ginn, Rosie Brancacio,
Bonnie Adams, Alan Upshaw...at your service!**

Competition Special Subjects

October 2015...
Fall Colors

February 2016...
Night Photography

April 2016...
Eyes

Competition Rules

3 entries per competition.
Categories of your choice
not to exceed (2) in any
combination of categories.

Categories will be:

Small Prints (9x13 max)
Monochrome Prints
(Large Back)
Color Prints (Large Back)
Slides
Digital

Submit your images for
digital competitions to:
Glenn Bolivar...

glennabolivar@gmail.com

Digital images can also be
submitted on a flash drive
or other media, and **MUST**
be received no later than
midnight on the Sunday
before the Competition.
Images not received in time
will not be entered into the
competition.

September Competition Results

Judge: Greg Villegas

Small Prints

| | | |
|-----------------------|--------------------------|----------------|
| 1 st Place | <i>The Way Up</i> | Janine Bognuda |
| 2 nd Place | <i>Dillinger's Alley</i> | Elaine Calvert |
| 3 rd Place | <i>Praying Mantis</i> | Jeanne Sparks |

Monochrome Prints

| | | |
|-----------------------|------------------------------|----------------|
| 1 st Place | <i>Storm Coming</i> | Richard Russ |
| 2 nd Place | <i>Circles</i> | Ron Calvert |
| 3 rd Place | <i>Refuge from the Storm</i> | Elaine Calvert |

Color Prints

| | | |
|-----------------------|------------------------------------|----------------|
| 1 st Place | <i>Crimson Glow</i> | Janine Bognuda |
| 2 nd Place | <i>Hotel Hallway</i> | Penni Powell |
| 3 rd Place | <i>Girls Just Want to Have Fun</i> | Ron Calvert |
| HM | <i>Bristle Cone Pine #2</i> | Elaine Calvert |

Digital

| | | |
|-----------------------|----------------------------------|----------------|
| 1 st Place | <i>Light and Landscape</i> | Ed E. Powell |
| 2 nd Place | <i>Quite the End of the Race</i> | Flavio Parigi |
| 3 rd Place | <i>Cranes and Geese</i> | Dave Clary |
| HM | <i>Sunset Salmon Bay</i> | Gregory Doudna |

Slides

| | | |
|-----------------------|--------------------------------|--------------|
| 1 st Place | <i>3 Long Necks at Sunset</i> | Robert Ginn |
| 2 nd Place | <i>Surfer</i> | Robert Ginn |
| 3 rd Place | <i>Red, Green, Blue</i> | Penni Powell |
| HM | <i>Before the Fall, N.Y.C.</i> | Robert Ginn |



Storm Coming by Richard Russ

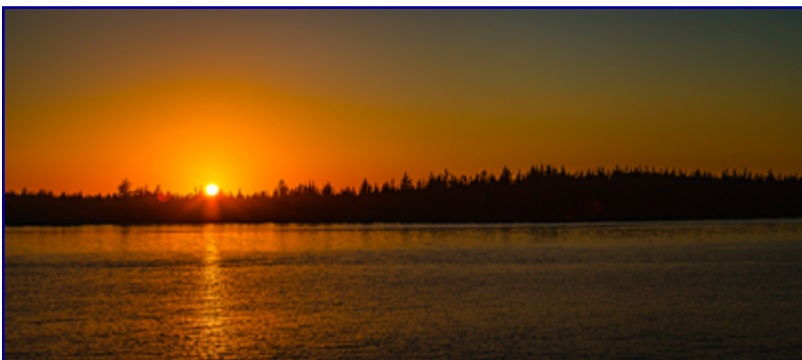


The Way Up by Janine Bognuda

A Selection of the Winning Images from
the September 2015 Competition.
These & many more images from club members
can be found on our website
santamariacameraclub.org/gallery.html



Light and Landscape by Ed E. Powell



Sunset Salmon Bay by Gregory Doudna



Quite the End of the Race by Flavio Parigi



Praying Mantis by Jeanne Sparks

Points North and East For October 2015 by Jim Ogg

This year the Eastern Sierra had a very dry winter and spring but the summer was very wet with Tioga Pass closing for snow! Also this is an extreme wildfire year. Check for smoke and haze especially in the Eastern Sierra. The last week of August, 2015, found smoke and haze throughout most of the Sierra.

Fall Color continues to be the big attraction in October in the Eastern Sierra! The high country, 7,000 to 10,500 feet elevation, Aspens and Cottonwoods Fall color may still be near their peak early in October. Check for Fall Color at Virginia Creek, Virginia Lakes, Conway Summit, Bishop Creek, Laurel Meadows, Hilton Creek, Lee Vining Creek, Summers Meadows, and South Bishop Creek Waterfall. Sealth image SR021 shows the spectacular fall color reflections in Bishop Creek below Lake Sabrina.

The Fall Color areas in the 4,000 - 7,500 feet elevation range usually peak in early to mid October. Included in the 7,500 foot range are Convict Lake Loop Trail, McGee Creek, June & Gull Lakes, Reversed Peak Tarns, Grant Lake, Lundy Canyon, Tuffs Campground, Buckeye Creek, Masonic, Leavitt Meadows, and Parker Lake. At lower elevations and usually a week or two later, look for Fall Color in the Buttermilks, Bishop area, and Alabama Hills. In the lower elevations, Cottonwoods are the predominate Fall Color.

Fall Color usually comes to the Western Sierras mid to late October. Yosemite has Aspens at higher elevations but they are not as consistent, prolific or as accessible as the Aspens of the Eastern Sierra. However the Western Sierra has Black Oaks in 4,000 foot range, its Yellow Pine Belt. Black Oaks have the best fall color of the Oaks family. The most well known grove of Black Oaks is near the entrance to Yosemite Valley. It has El Capitan as a backdrop; some backdrop! Also Black Oaks can be found at Oak Creek in Owens Valley. Yosemite Valley

also has some "alien" trees that are spectacular in Fall Color; look near the church for one. Also the Generals Highway Loop in Sequoia & Kings National Parks is worth checking out for Fall Color.

"First Snow" usually happens in October. I find my best snow images in First Snow and "Last Snow" rather than "Mid Winter Snow". First Snow and to a lesser degree Last Snow contours the mountains accentuating their features and naturally flocks the trees and shrubs. And this month those trees may still have Fall Color! I look for First Snow opportunities in the Mammoth Lakes Basin, Heart Lake in Little Lakes Valley, Convict Lake Loop Trail, Bishop Creek and McGee Canyon. The best time is first sunlight after the snow storm. Achieving this is often a serious access challenge. You might have to cross country ski or snowshoe in.

Bodie in First Snow is visually dramatic. A fresh covering of snow blasts sunlight into the sides of the Bodie structures like a giant reflector. Once I cross country skied the streets of Bodie racing the Park Ranger's snow plow. Also I hope to photograph the Bristlecone Pines in First Snow or Last Snow.

Also First Snow usually closes Tioga Pass. However the Yosemite Park management will sometimes reopen it. Several years ago they kept it open until New Years Day but usually appear to prefer to keep it closed. I plan for Tioga Pass to be open or reopened until the end of October and closed permanently at the first major snow after the beginning of November.

October 1 or when the Snowy Plover chicks fledge, human access to many of our Central Coast beaches and dunes resumes. Immediately after opening is the best time for shooting; no footprints, lots of animal tracks and undisturbed sand ripples. The three miles of the Sand (Dunes) Spit of Montana De Oro SP are especially productive.

Bishop Creek Reflections (SR021)

The headwaters of Bishop Creek, below Lake Sabrina, has the most colorful trees in the Fall. And their reflections are even more vivid.

The "Bishop Creek Reflections" image is part of the Sealth body of work which are digital images of landscapes, scenics, and the human form and are based on locations in the Lake Sabrina, Bishop Creek, Bishop, Owens Valley, Eastern Sierra, High Sierra and Central Coast of California.



Please provide additions,
corrections & comments via email
jimogg@tcsn.net
and visit the website,
www.tcsn.net/ogg

Text and Images are copyrighted
by Jim Ogg. All rights reserved.
Please see website for details.

The November Election of 2016 Club Officers

Procedural Requirements By-Laws, revised November 2012

Article III

“Nominations will be made in October by a **Nominating Committee** appointed by the **President**. The committee shall nominate one or more persons for each office. Further nominations may be made at the meeting at which the **Nominating Committee** reports its candidates by any member in good standing. Consent of each nominee must be obtained prior to the election.

Election of club officers shall be held in November of each year. If more than one person is nominated for an office, written ballots will be distributed. The majority of the members present, in good standing, with a quorum, will decide the vote. The date for the balloting will be published in the Galleon in advance. The new officers will be installed in January. Vacancies in any office shall be filled by the **Executive Board**.

A term limitation of 2 years will be enforced for the office of **President**. This limitation does not apply to the office of **Vice-President, Secretary or Treasurer.**”

The positions which are elected are: President, Vice President, Secretary and Treasurer

Election Timing

A **Nominating Committee** has been formed to select candidates for the Offices of **President, Vice President, Secretary and Treasurer** for the calendar year of 2016.

Alan Upshaw, Flavio Parigi and Janice Darby have been selected by the **President, Nyla James**, as members of this committee.

An announcement will be made to on or before **October 24th via Email** listing the candidates, selected by the committee who are willing to act in the respective capacity if elected. **The same notice will be published in the November Galleon.** This will provide members with an opportunity to think about the selected candidates and determine if he/she or they wish to nominate any additional candidates.

A formal announcement of the candidates selected by the **Nominating Committee** will be made at the **Program Meeting on November 4, 2015.** This is required by the By-Laws. Additional candidates may be nominated by any member in good standing at that meeting.

Then the **final list of candidates**, including any nominated by the membership at the Program Meeting if any, will be **sent out by Email** to the membership **on or before Monday November 9, 2015.**

The election of officers for 2016 will be held at the Competition Meeting of November 18, 2015.

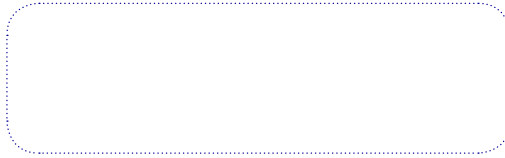
Dave Clary



Cranes and Geese by Dave Clary (Competition results on page 4)



Santa Maria Camera Club
P.O. Box #1605
Santa Maria, CA. 93456
santamariacameraclub.org



Crimson Glow by Janine Bognuda (Competition results on page 4)